

Technical Data Sheet

CODE 61701

NORDIK INTERNATIONAL PLUS 90/36



Ceiling fans



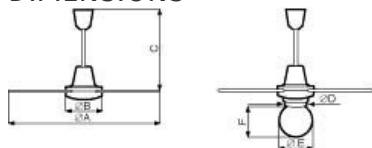
Certifications



TECHNICAL AND PERFORMANCE DATA

Absorbed Current max (A)	0,32	Airflow speed at max speed (m/s)	2,59
Absorbed Power max (W)	70	Delivery max (m ³ /h)	8550
Blades diameter	90	Delivery max (m ³ /min)	142,50
Frequency (Hz)	50	giri_minuto	228
Insulation Class	I°	RPM	228
Voltage (V)	220-240	Service value (m ³ /min)/W	2,036
Weight (Kg)	5	Sound power level Lw [dB(A)]	46,1

DIMENSIONS



Size A (mm)	∅
	914
Size B (mm)	∅
	230
Size C (mm)	495

PER INFORMAZIONI:

Servizio al Cliente: tel +39 02 90699395 premendo 1 dopo messaggio registrato (consulenza su prodotti e impianti)

Pre & Post Vendita: fax +39 02 90699302

Email prevendita: prevendita@vortice-italy.com

Technical Data Sheet

CODE 61701

NORDIK INTERNATIONAL PLUS 90/36



Ceiling fans

DESCRIPTION

- Nominal diameter of blades 900 mm
- Top and bottom motor covers moulded from heat-resistant and UV-resistant thermoplastic resin (ABS), colour white
- Wiring connections at end of ceiling rod concealed by domes moulded from impact- and UV-resistant PP, colour white.
- Single phase start capacitor motor with external rotor, and shaft turning in ball bearings.
- Maximum air flow: 8,550 m³/h.
- 3 sheet steel blades powder coated with scratch-resistant polyester, colour white.
- Steel ceiling rod with polyester powder coated finish, colour white, length 375 mm.
- Bag of accessories containing nuts and bolts required for assembly of blades, ceiling hook and rubber anti-vibration washer.
- Factory-prepared to accept Light Kit (optional), suitable for lamp rated 150W max with E27 screw fitting, or equivalent energy-saving lamp with E27 screw fitting.
- Speed selectable by way of control units (optional)

ACCESSORIES



TELENORDIK 5T

Code 22387



PLUS LIGHT KIT (KIT LUCE)

Code 22415



KIT SCB5 (TRASF.5 V.)

Code 22483



SCNR5 UNIF.X NK SOFFITTO

Code 12955



SCNRL5 UNIF. X NK SOFFITTO

Code 12957



C 2.5 (COMANDO EL. 2.5 A)

Code 12967



SC 503 B

Code 12801



SC 503 N

Code 12802



SC EXT B

Code 12803



SCI503

Code 22461



PSC-W

Code 22462

PER INFORMAZIONI:

Servizio al Cliente: tel +39 02 90699395 premendo 1 dopo messaggio registrato (consulenza su prodotti e impianti)

Pre & Post Vendita: fax +39 02 90699302

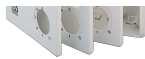
Email prevendita: prevendita@vortice-italy.com





PSC-B

Code 22463



**KIT SCB
(TRASF.E.C.)**

Code 22481



**ASTA NK I 200
BIANCA**

Code 22032



**ASTA NK I 250
BIANCA**

Code 22033



**ASTA NK I 350
BIANCA**

Code 22042



**ASTA NK I 500
BIANCA**

Code 22051



**ASTA NK I 750
BIANCA**

Code 22074



**ASTA NK I 1000
BIANCA**

Code 22077