

Technical Data Sheet

CODE 12453

VORTICE 230/9" ARI

Wall/window axial fans



Certifications



IMQ



CE



IMQ Performance



C Tick Mark



EAC

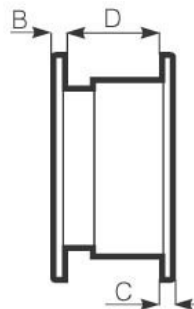
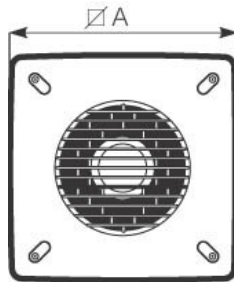


G-Mark

TECHNICAL AND PERFORMANCE DATA

Absorbed Current max (A)	0,13	Voltage (V)	220-240
Absorbed Power max (W)	26	Weight (Kg)	3,88
Frequency (Hz)	50/60	Delivery max - Extract (l/s)	125
Inlet	Automatico	Delivery max - Extract (m3/h)	450
Insulation Class	II°	Delivery max - Intake (l/s)	83,3
IP	X4	Delivery max - Intake (m3/h)	300
Max absorbed Power at 60Hz (W)	26	Delivery max (m³/h)	450
Max ambient temperature for continuous operation (°C)	50	RPM	810
Max ambient temperature for continuous operation 60Hz (°C)	50	Rpm - Exhaust	810
Ø Discharge Hole (mm)	230	Rpm - Supply	1080
		Sound Pressure Level Lp [dB (A)] 3m	35,7

DIMENSIONS



Ø wall hole	335/340
Size A (mm)	400
Size B (mm)	10
Size C (mm)	11
Size D (mm)	180

PER INFORMAZIONI:

Servizio al Cliente: tel +39 02 90699395 premendo 1 dopo messaggio registrato (consulenza su prodotti e impianti)

Pre & Post Vendita: fax +39 02 90699302

Email prevendita: prevendita@vortice-italy.com

Technical Data Sheet

CODE 12453

VORTICE 230/9" ARI

Wall/window axial fans



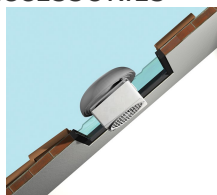
DESCRIPTION

- Model designed for installation recessed into wall.
- Reversibility function (intake or extraction).
- Automatic shutter: prevents the entry of cold air and bad smells when the appliance is switched off.
- Material: UV resistant ABS plastic (prevents ageing caused by exposure to sunlight)
- Nominal diameter 230 mm.
- Motor protected against thermal overload, with shaft turning in self-lubricating bushings, coupled to screw type thermoplastic impeller with wing profile blades.
- IMQ SAFETY and IMQ PERFORMANCE certifications.

CURVES

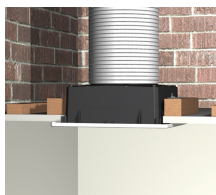
□

ACCESSORIES



KIT TE 230/9"
(TORRETTA)

Code 13002



KIT SO
(SOFFITTO)

Code 13012



KIT ML 230/9"
(MURO-LARGO)

Code 13016



KIT TC 230/9"
(TETTO CON
CONDOTTO)

Code 13028

PER INFORMAZIONI:

Servizio al Cliente: tel +39 02 90699395 premendo 1 dopo messaggio registrato (consulenza su prodotti e impianti)

Pre & Post Vendita: fax +39 02 90699302

Email prevendita: prevendita@vortice-italy.com